

Seamless
weatherproofing for
any type of opening in
roof and wall cladding.

aperture[®]
seamless possibilities



aperture applications

aperture is a seamless cold applied system designed for any type of opening in both roof and wall cladding.

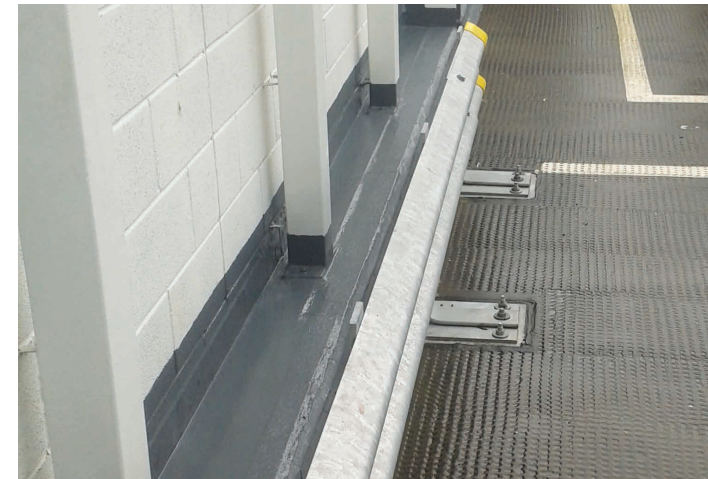
aperture benefits

- High Elongation
- Permanent Elasticity
- Cold Applied, Using Hand Lay Process
- Durable Finish
- Reinforced With Chopstand Matting
- Can be Applied During or After Construction
- Minimal Disruption
- Maintenance Free
- 10 Year Guarantee Available

This system is ideal for any difficult roof junction details, problematic gutters and much more.

Typical applications

- Sun Pipes and Wind Catchers
- Leaking Gutters
- Insulated Curbs and Vents
- Velux Windows
- Car Park Details
- Rooflights & Hatches
- Pipe Penetrations
- Sealing End Lap Joints
- Any Difficult Detail Work
- 10 Year Guarantee Available

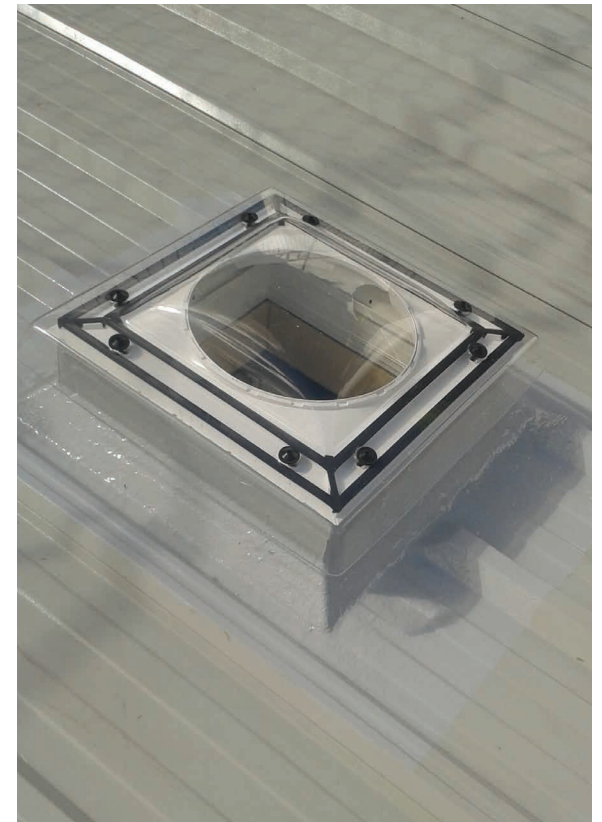




Sun pipes and wind catchers



Windcatcher,
Northolt.



Sunpipe,
North Hykeham School.

Insulated curbs and vents



Rooflight kerbs,
Eastham.



Kerbs for rooflights,
Lee on Solent.



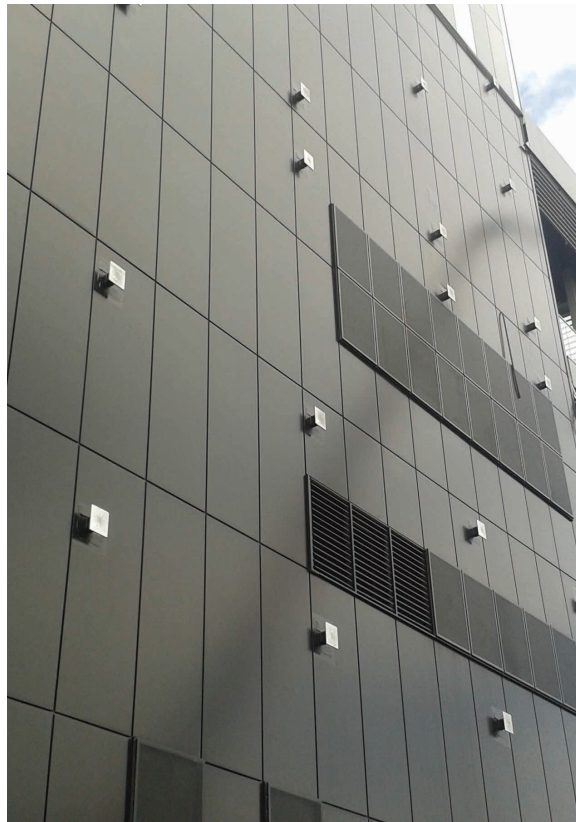
Smoke vents,
RAF Valley.



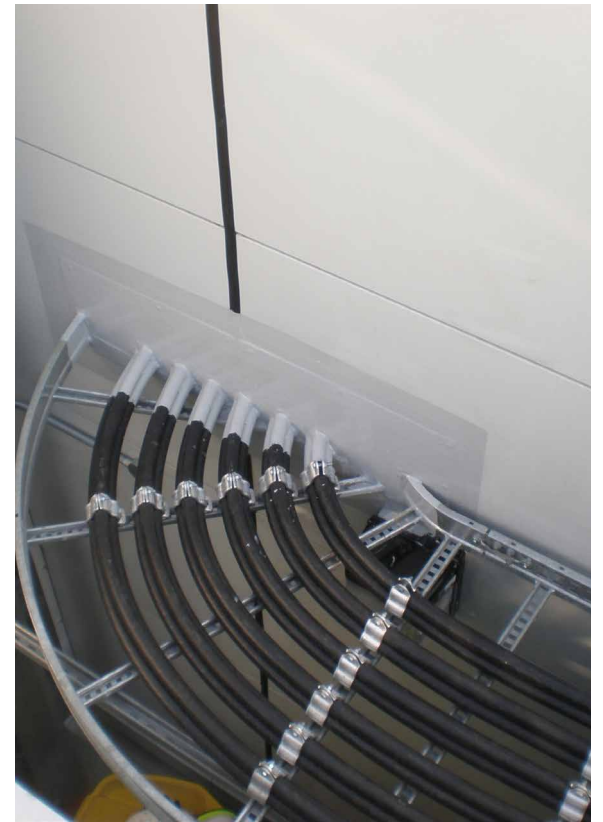
Cladding penetrations



Cable tray,
Waterloo.



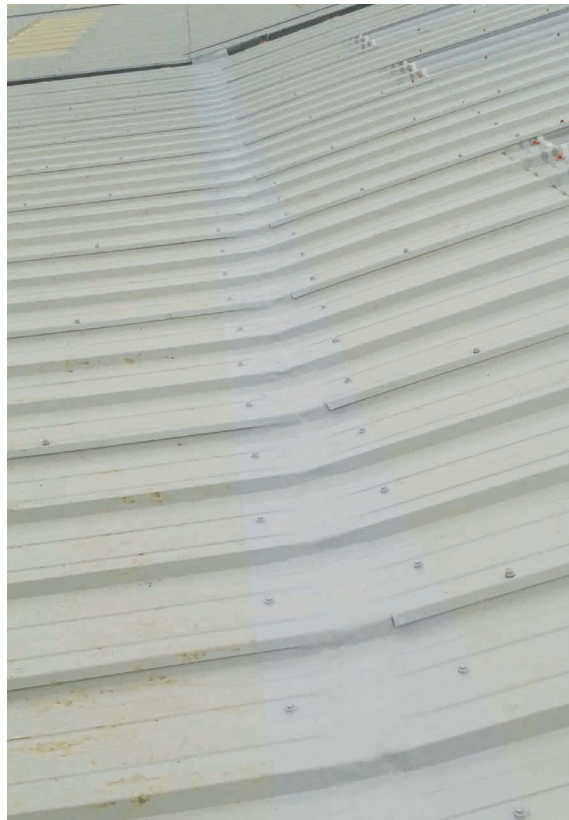
Stubs,
NEC, Birmingham.



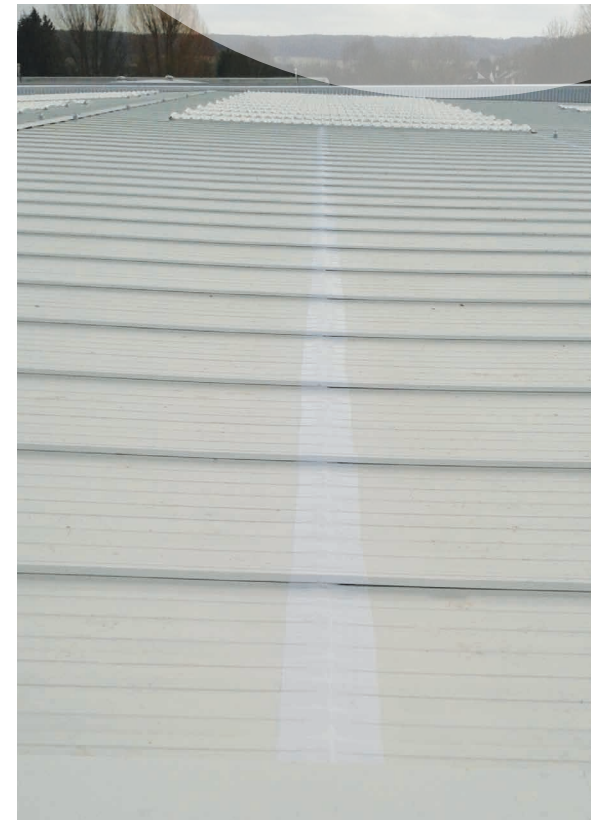
Cable tray,
Royal London Hospital.



Sealing end lap joints



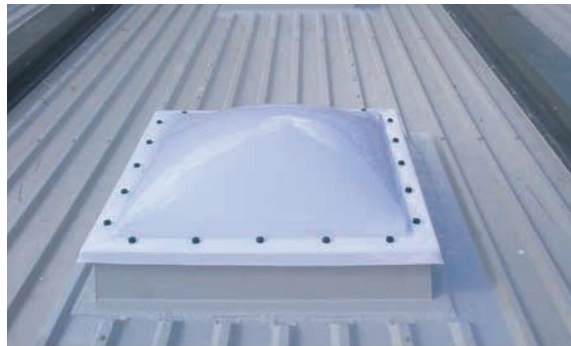
The abutment
of differing pitches.



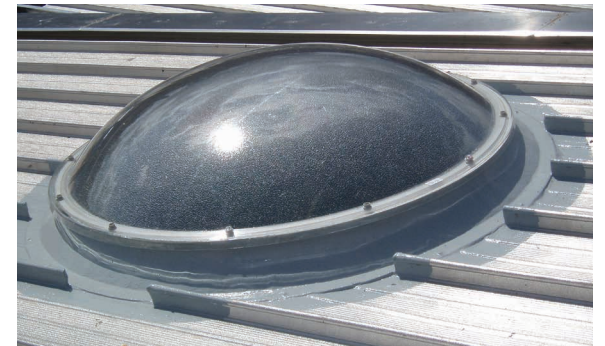
Sealing end lap joints,
JBC Roofing, High Wycombe.



Rooflights and hatches



Rooflights, Sidcup.



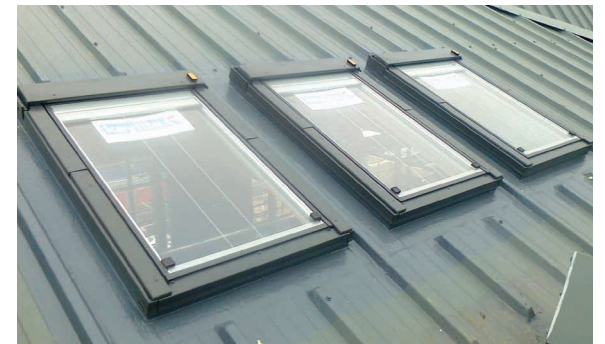
Circular rooflight, Farnborough.



Liverpool Football Club, new stand, access hatch.



Access hatch, Hull.



Rooflights, Cambridge.



Pipe penetrations



Riser, Bishops Hatfield.



Riser with ducts, Watford.



Pipes through wall, Goffs School.



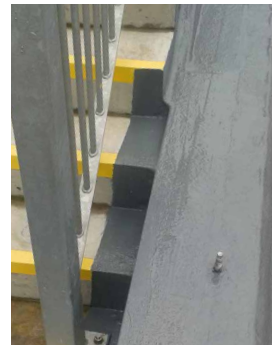
Pipe riser, Goffs School.



Car park details



Grande car park, sealing stairs to roof, Aberdeen.



Grande car park, Aberdeen.



Grande car park,
Aberdeen.



Grande car park,
Aberdeen.

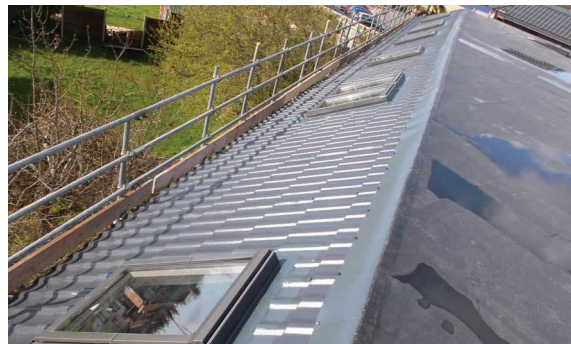


Grande car park,
Aberdeen.



Velux tapered,
North Hykeham School.

Velux windows



Velux rooflights,
Oxford.



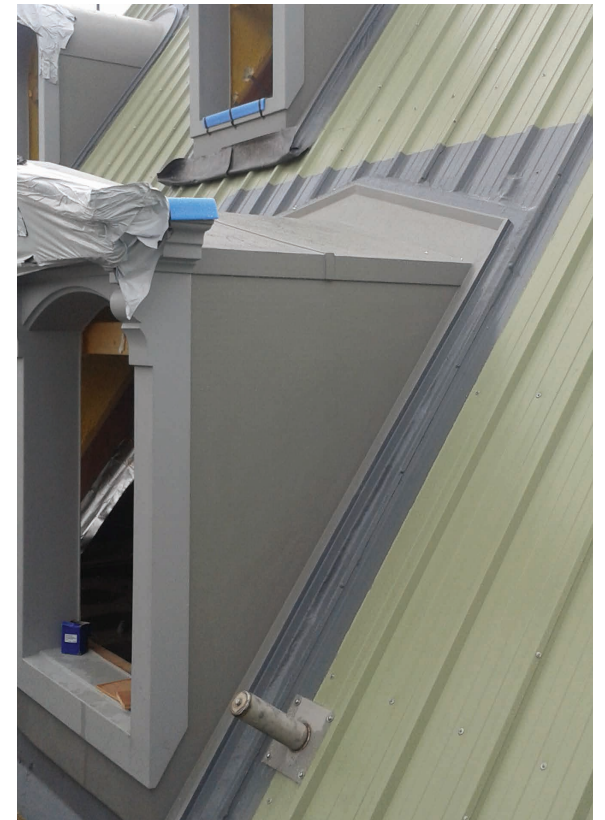
Velux tapered,
North Hykeham School.



Dormer windows



Dormer, Grand Hotel, Birmingham.

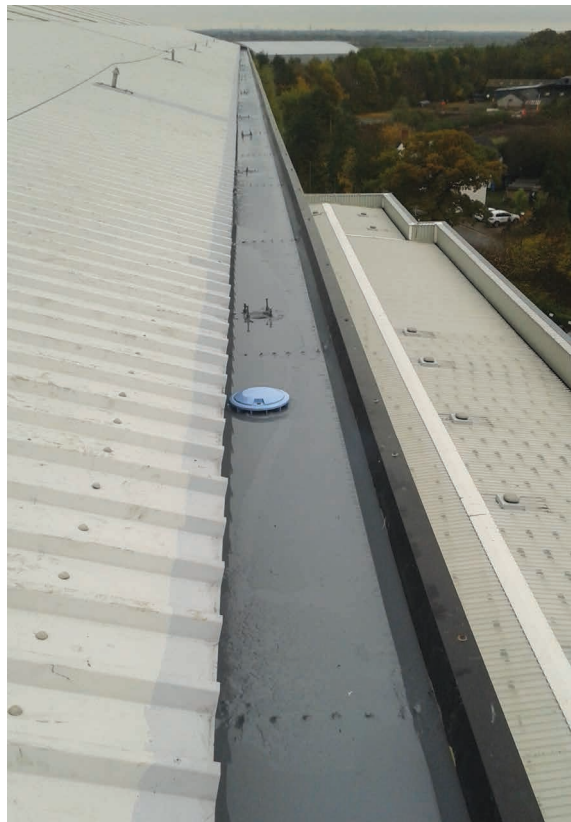


Dormer, Grand Hotel, Birmingham.

Gutters



Valley, Elmstead.



Gutter refurbishment, Monarch hanger, Manchester Airport.



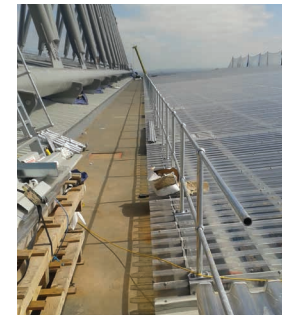
Leaking gutter overlay, Blackpool.



We seal any difficult detail

Watertight protection for any problematic area

aperture is a versatile application that can weatherproof just about any difficult detail, from exposed pipes and ducting, problematic guttering to car park detailing.



Liverpool Football Club, new stand, steel support penetrations.



Roof junctions, Peckham.



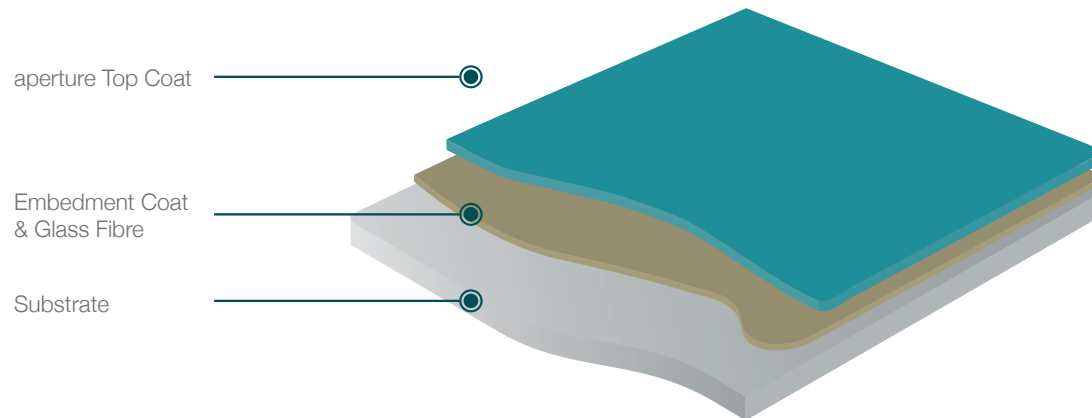
Tapered roof sheet abutment, Burnley.



Difficult pipe details, WMP Custody Suite.

We seal seamlessly

aperture is cold applied using a hand lay process to offer a quick, durable solution to the most challenging roof or cladding area. Reinforced with a polyurethane overlay, flexi-resins are fused together with glass fibre reinforcement to form a tough, impervious skin suitable for all roofs. Offering minimal disruption, only company trained and directly employed technicians are permitted to install the system, ensuring a consistent quality of installation. The flexible nature of the aperture system means that it can be applied during or upon completion of construction.



aperture was formed as a direct response to part L2 of the new building regulations covering air permeability and thermal bridging and ensures that the roof area is sealed to a standard that will assist the specifier in achieving Part L2.

aperture carries out over 700 contracts annually offering a total national service across the UK and Ireland, based from our Manchester office in England.

The company operates across all sectors providing its specialist service to roofing contractors, main contractors and directly to end clients. Typical problem areas our aperture weathering system can resolve include water ingress, mastic reliant details, air leakage, leaking metal end laps, gutter joints and unsightly flashings on areas surrounding ducts, gutters, access hatches, pipes and junctions.

For further information call us on:

0161 772 1750

www.aperturesp.co.uk

email: dphilbin@aperturesp.co.uk

cpeers@aperturesp.co.uk

Fax: 0161 772 1751

aperture

Richmond Road, Trafford Park
Manchester, M17 1RE