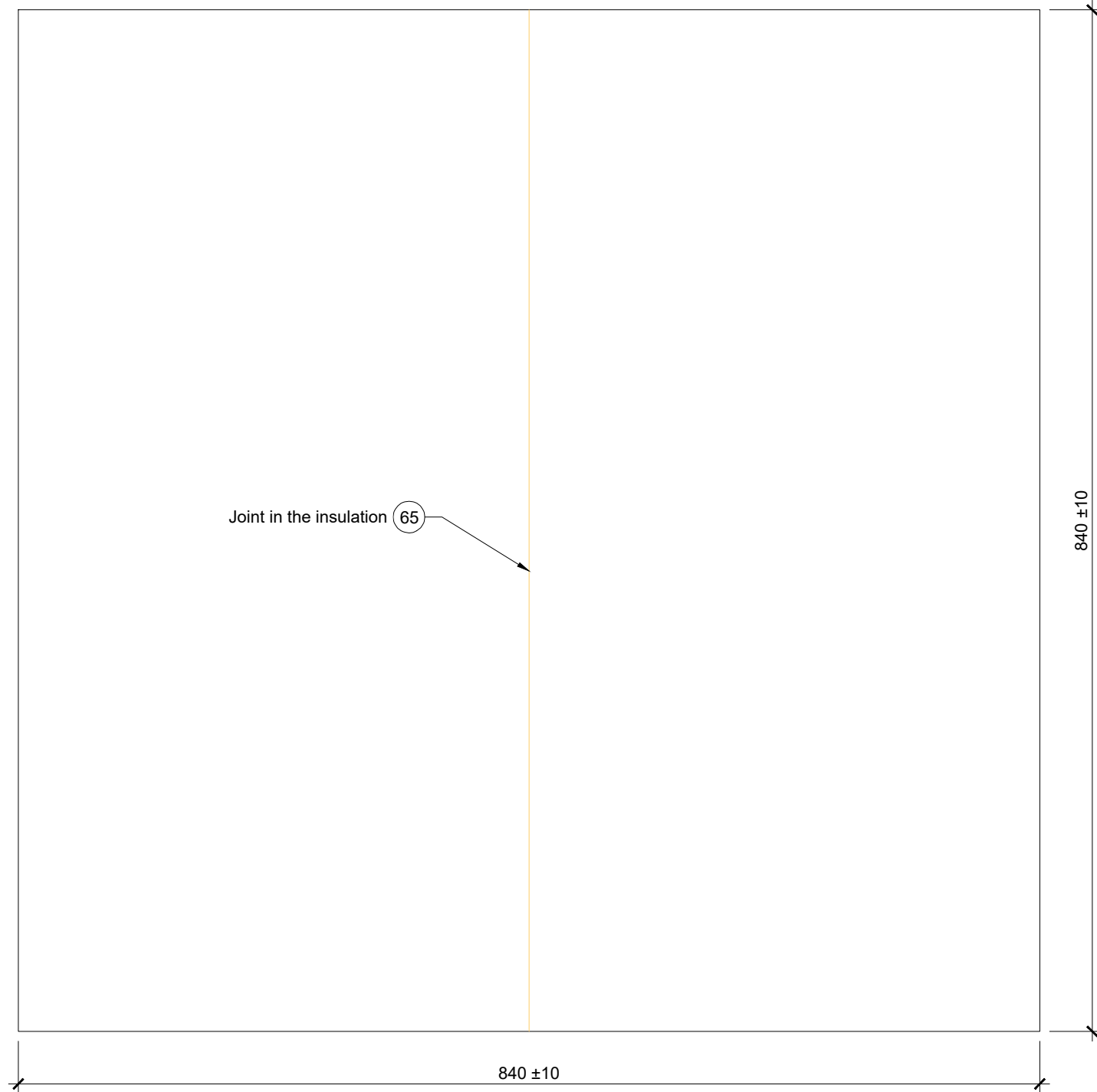
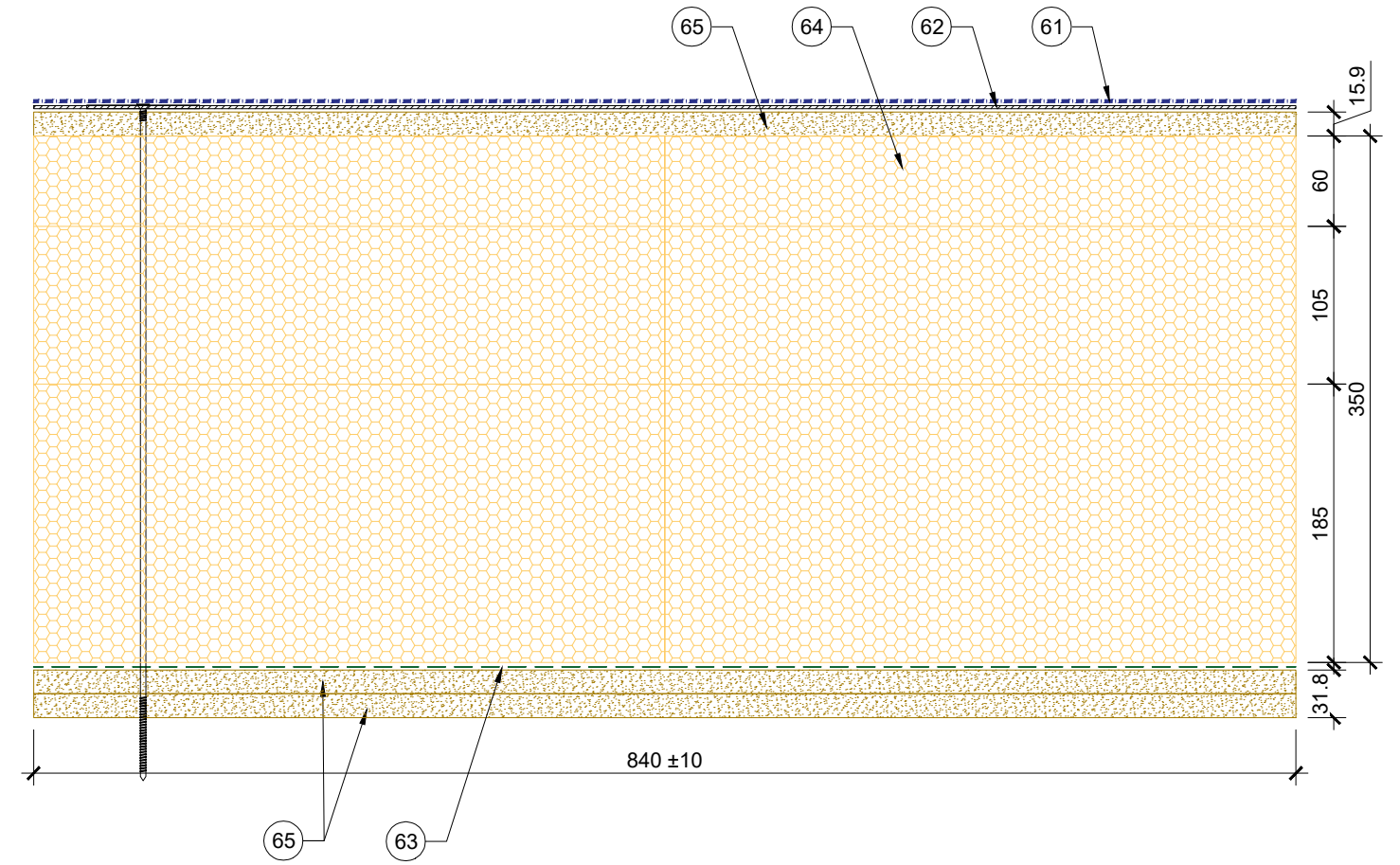


PLAN VIEW



DETAIL



- (61) Aperture cold applied system
- (62) 0.7mm Plastisol coated metal carrier membrane
- (63) 0.4mm Alutrix FR VCL
- (64) Rockwool Hardrock Multi-Fix Insulation board
- (65) 15.9mm (5/8") DensDeck Prime Roof Board, **double layered** with staggered joints



Briggs Amasco Ltd,
Premier House
Station Road
Harold Wood, Essex
RM3 0BS
Telephone: (020) 8536 6630
E-mail: purobel@briggsamasco.com



Scale	NTS	@ A3
Drawn By	PW	Checked By MK
Date	06/23	Date 06/23
Title		
APERTURE RISER BUILDUP 02 350MM INSULATION SAMPLE 2		
Drawing No.	BAM-DRW-0202	Rev P01