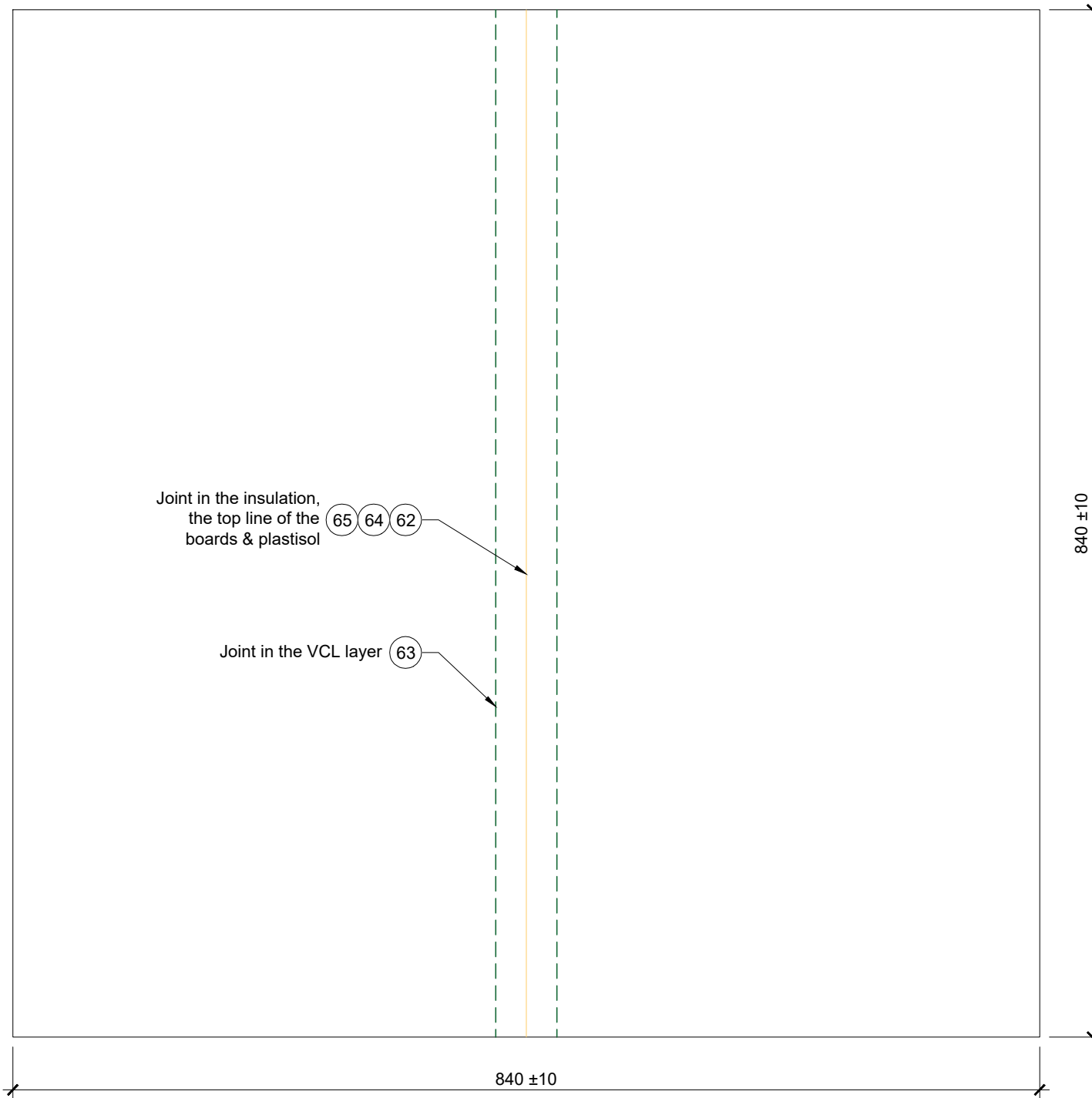
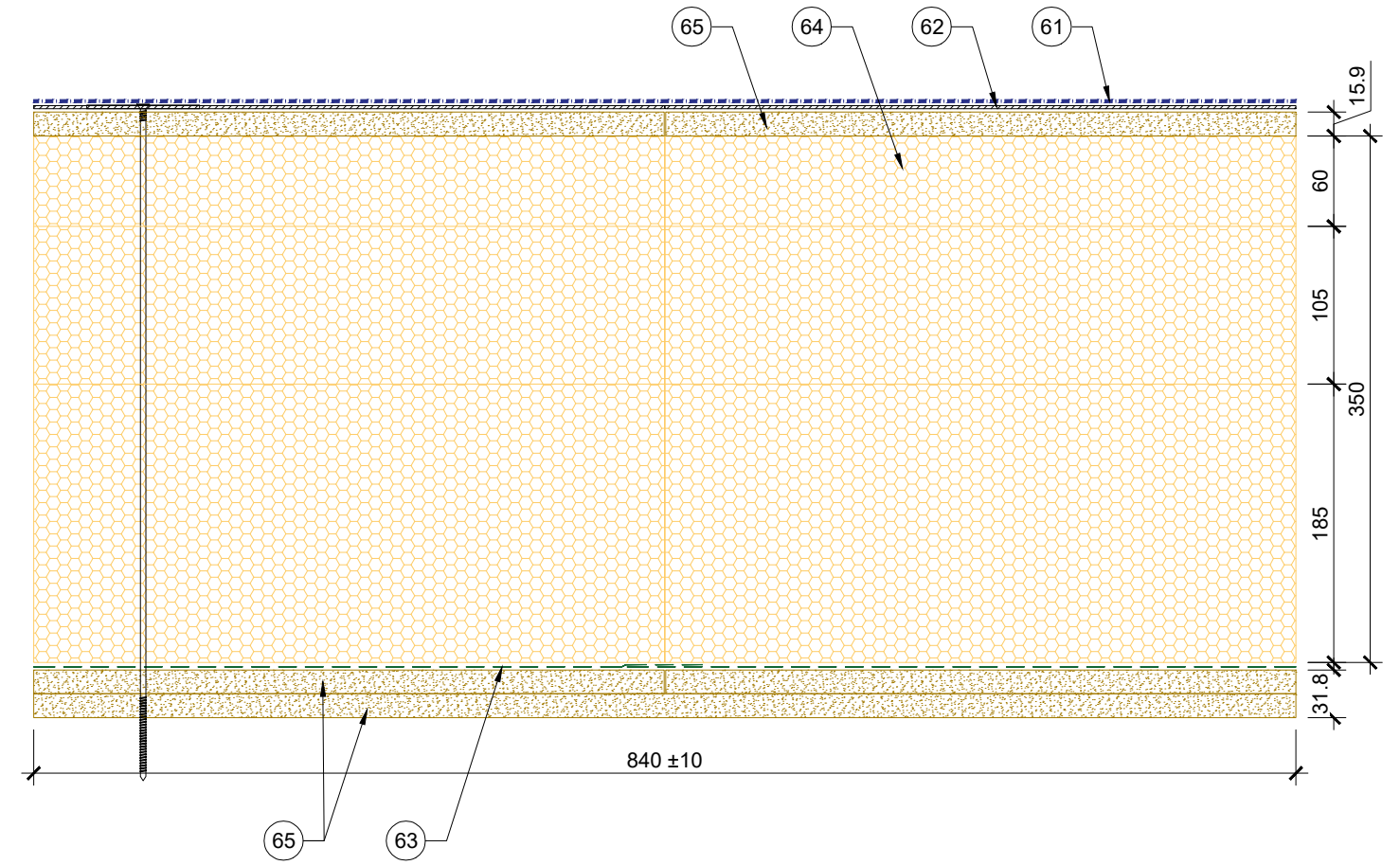


PLAN VIEW



DETAIL



- 61 — Aperture cold applied system
- 62 — 0.7mm Plastisol coated metal carrier membrane
- 63 — 0.4mm Alutrix FR VCL
- 64 — Rockwool Hardrock Multi-Fix Insulation board
- 65 — 15.9mm (5/8") DensDeck Prime Roof Board, double layered with staggered joints



Briggs Amasco Ltd,  
Premier House  
Station Road,  
Harold Wood, Essex  
RM3 0BS  
Telephone: (020) 8536 6630  
E-mail: purobel@briggsamasco.com



Scale	NTS	@ A3
Drawn By	PW	Checked By MK
Date	06/23	Date 06/23
Title		
APERTURE RISER BUILDUP 02 350MM INSULATION SAMPLE 1		
Drawing No.	BAM-DRW-0201	Rev P01