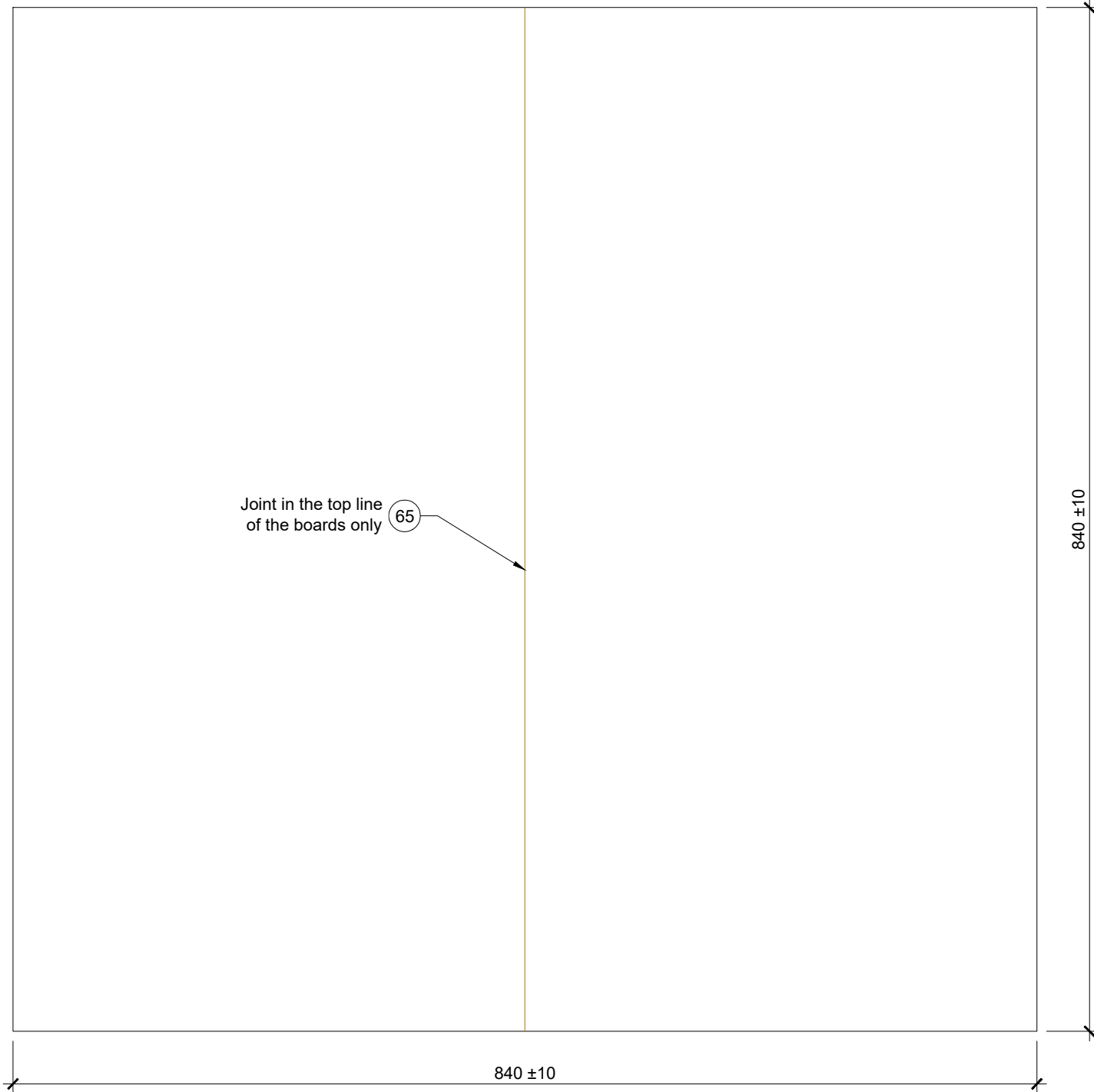
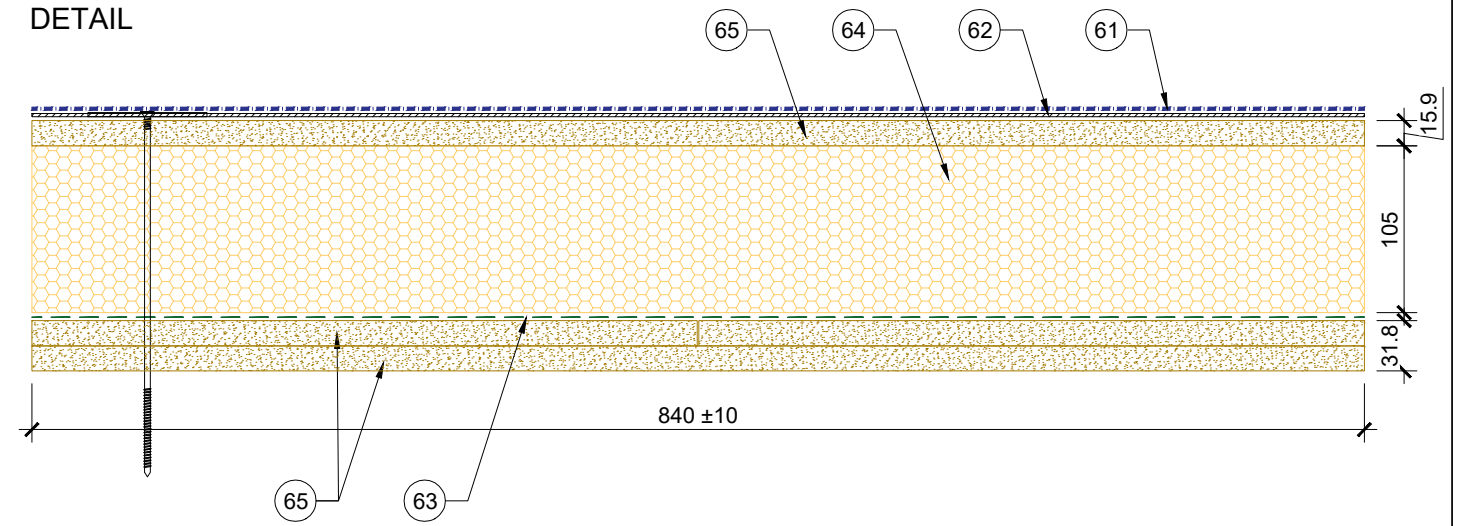


PLAN VIEW



DETAIL



- (61) Aperture cold applied system
- (62) 0.7mm Plastisol coated metal carrier membrane
- (63) 0.4mm Alutrix FR VCL
- (64) Rockwool Hardrock Multi-Fix Insulation board
- (65) 15.9mm (5/8") DensDeck Prime Roof Board, **double layered** with staggered joints



Briggs Amasco Ltd,  
Premier House  
Station Road  
Harold Wood, Essex  
RM3 0BS  
Telephone: (020) 8536 6630  
E-mail: purobel@briggsamasco.com



|   |              |               |
|---|--------------|---------------|
| Scale   | NTS          | © A3          |
| Drawn By  | PW           | Checked By MK |
| Date  | 06/23        | Date 06/23    |
| Title   |              |               |
| APERTURE RISER BUILDUP 01<br>105MM INSULATION<br>SAMPLE 3 |              |               |
| Drawing No.   | BAM-DRW-0103 | Rev<br>P01    |