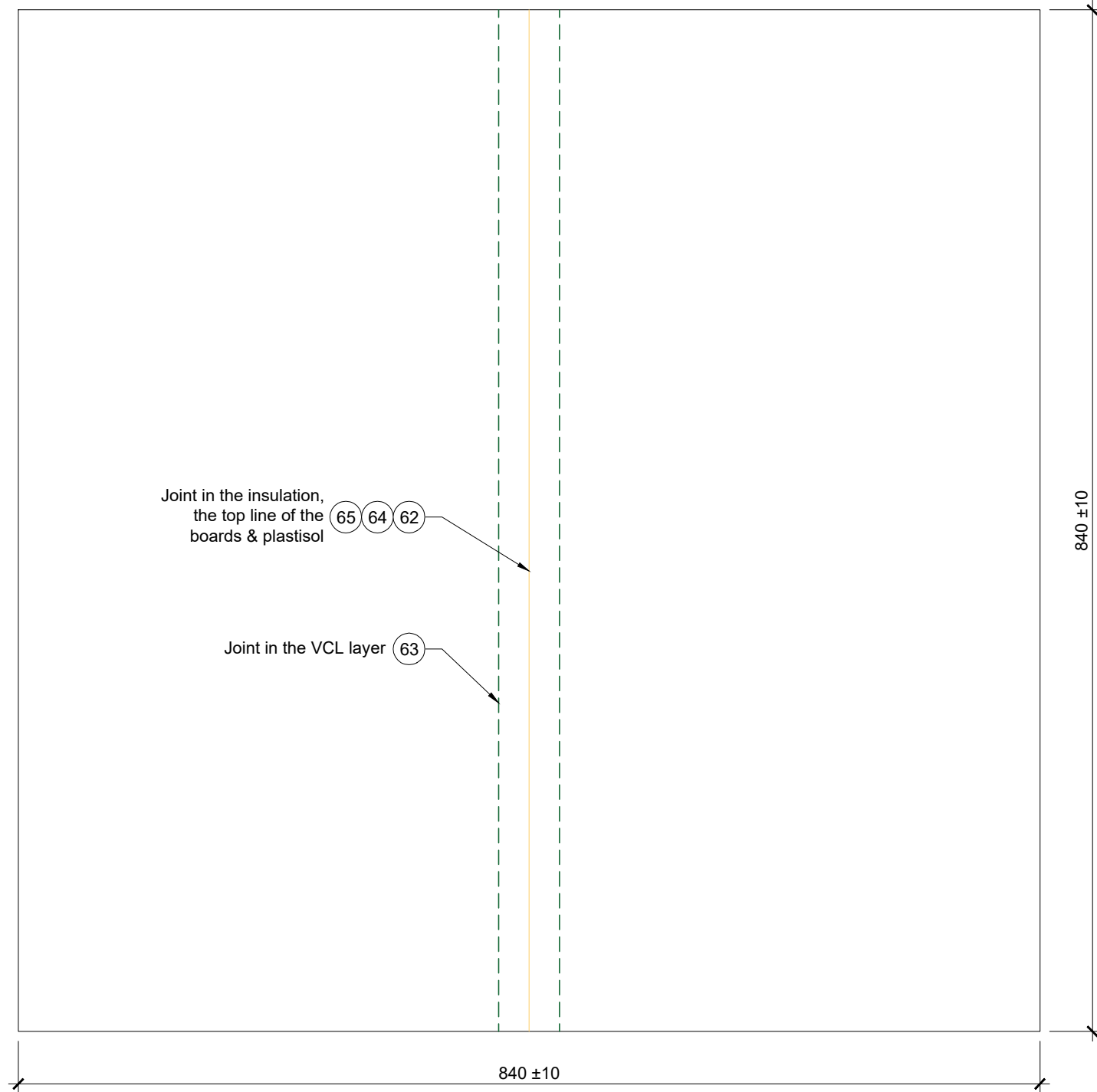
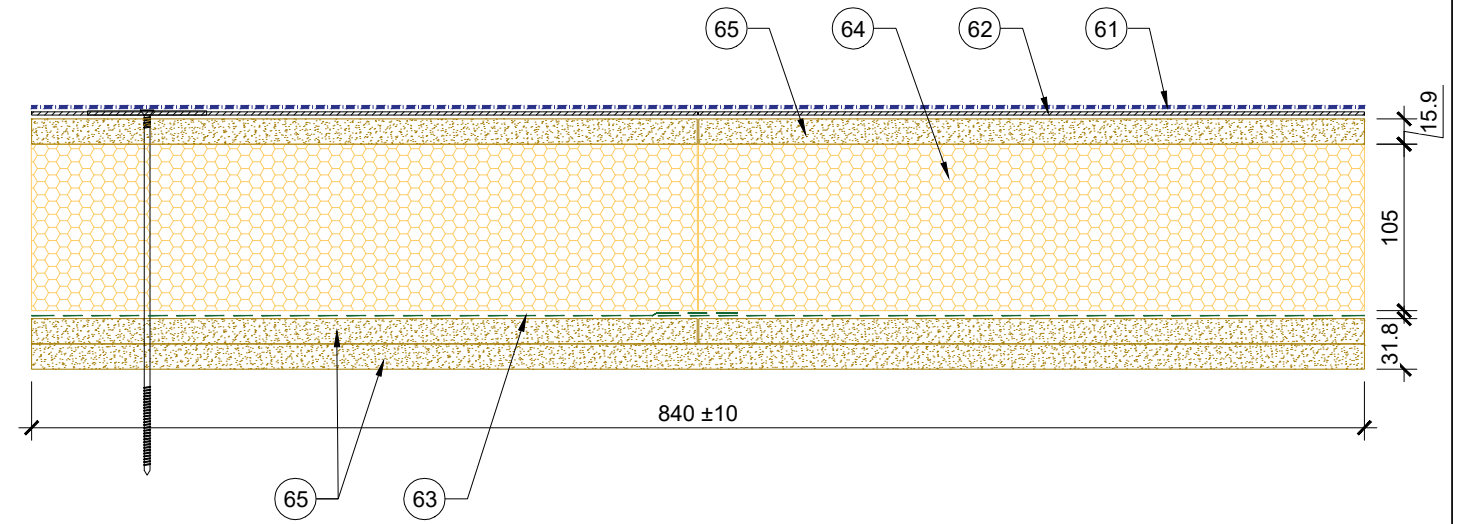


PLAN VIEW



DETAIL



- 61 — Aperture cold applied system
- 62 — 0.7mm Plastisol coated metal carrier membrane
- 63 — 0.4mm Alutrix FR VCL
- 64 — Rockwool Hardrock Multi-Fix Insulation board
- 65 — 15.9mm (5/8") DensDeck Prime Roof Board, **double layered** with staggered joints



Briggs Amasco Ltd,
Premier House
Station Road
Harold Wood, Essex
RM3 0BS
Telephone: (020) 8536 6630
E-mail: purobel@briggsamasco.com



| | | |
|---|--------------|---------------|
| Scale | NTS | © A3 |
| Drawn By | PW | Checked By MK |
| Date | 06/23 | Date 06/23 |
| Title | | |
| APERTURE RISER BUILDUP 01 105MM INSULATION SAMPLE 1 | | |
| Drawing No. | BAM-DRW-0101 | Rev P01 |