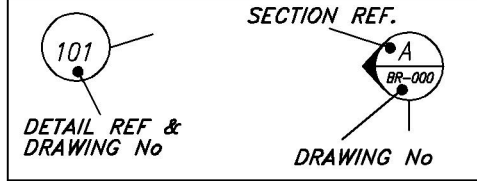
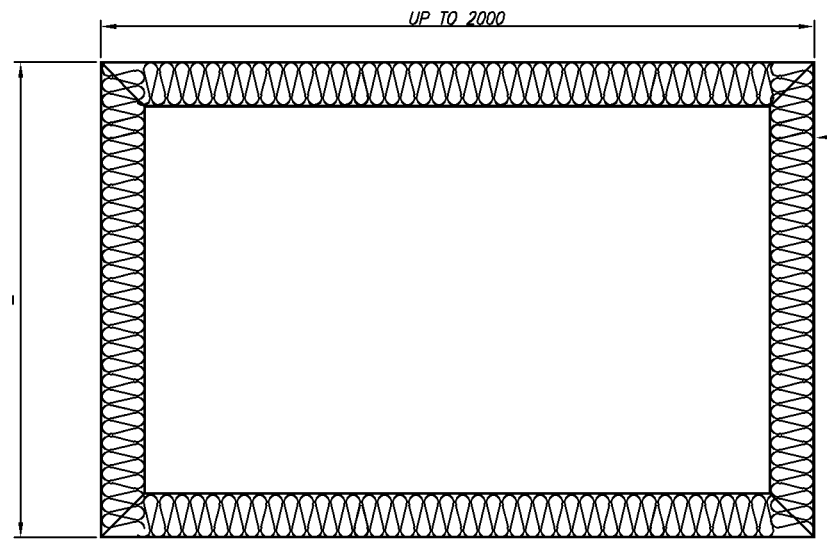


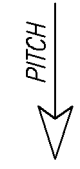
THIS DRAWING MUST NOT BE SCALED, WRITTEN DIMENSIONS ONLY
DO NOT SCALE - IF IN DOUBT ASK



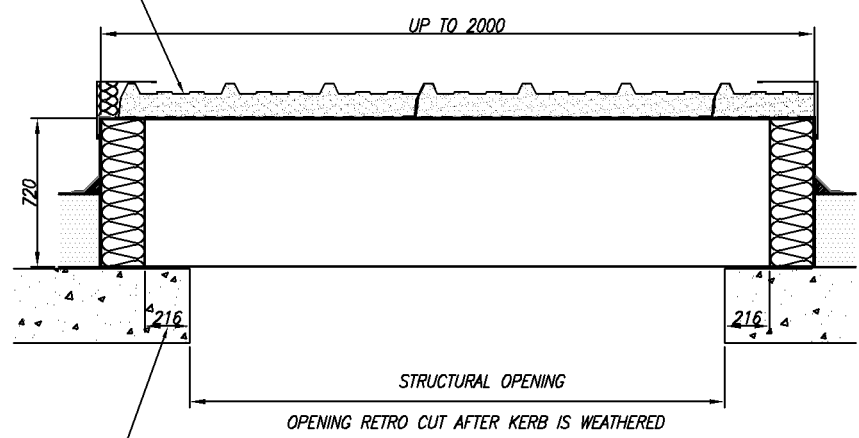
NOTES :-
ALL INTERFACES BETWEEN DIS-SIMILAR METALS MUST BE ISOLATED.



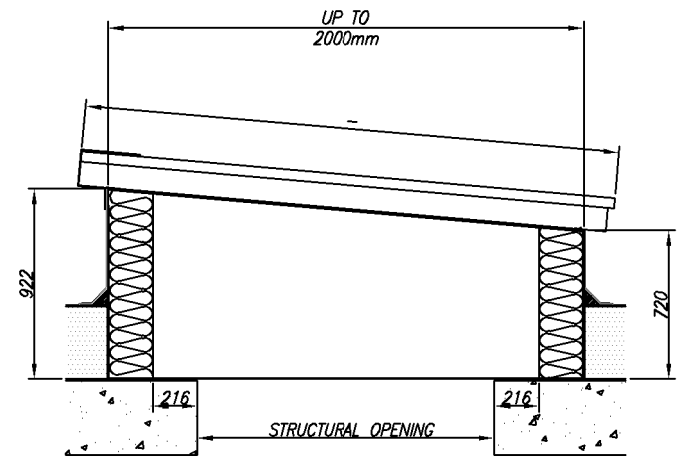
3mm THK ALUMINIUM CURB
PIR INSULATION SANDWICHED
BETWEEN 0.7mm THK ALUMINIUM



REMOVABLE LID TO ALLOW
CONCRETE REMOVAL



OVERSIZED TO ALLOW CORE DRILLING



Rev	Description	By

Status **FINAL**



Aperture Richmond Road,
Trafford Park,
Manchester,
M17 1RE

Client

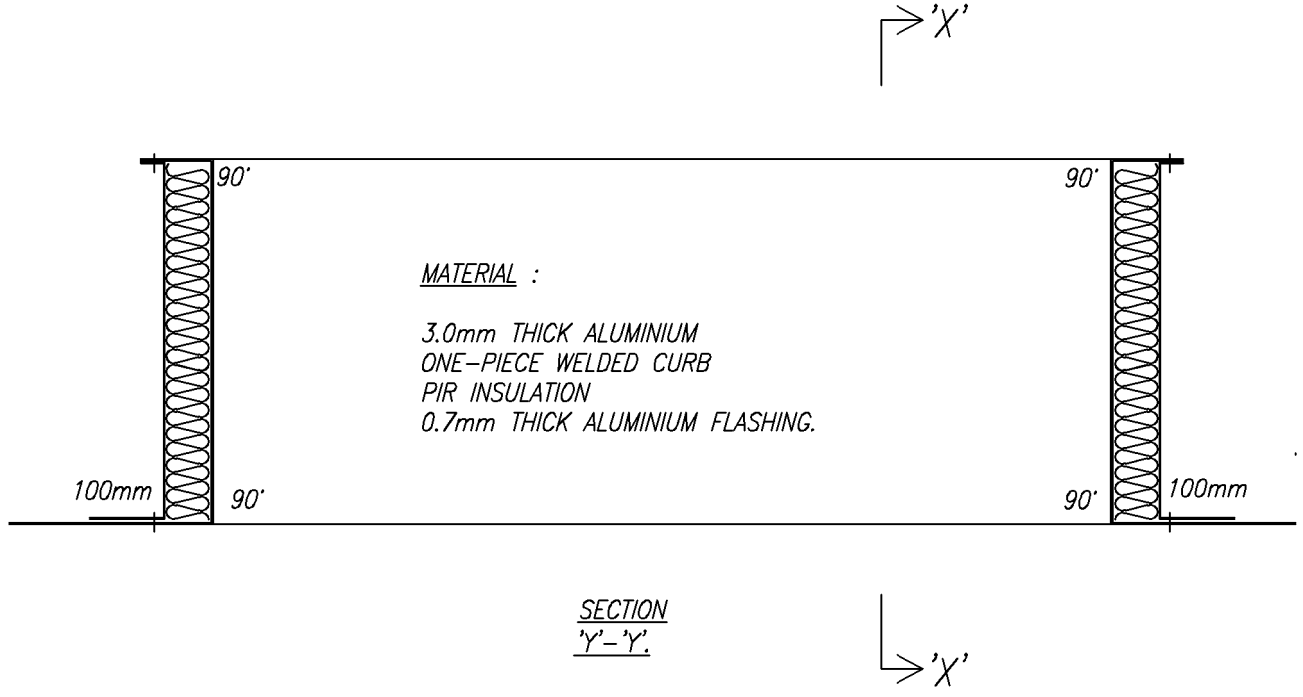
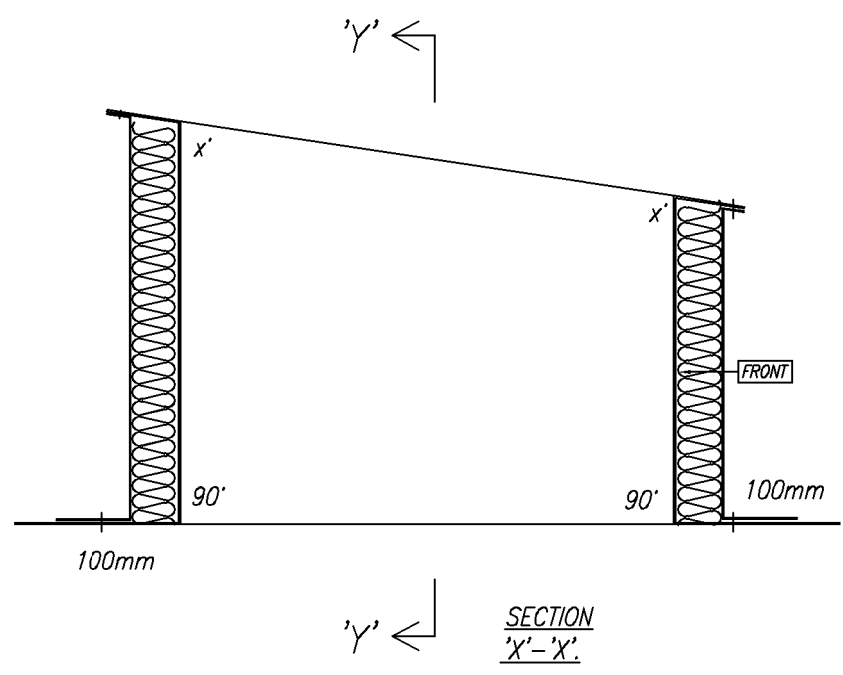
Contract

Scale 1: A3

Drawn By *BB* Checked By *TL*
Date 01-AUG-16 Date

Title
TWIN SKIN RISER DETAIL
FOR UP TO 2000mm
BUILD UP DETAILS

Contract No Drawing No Rev
3600-BAL-DRG-001 P1



MATERIAL :
3.0mm THICK ALUMINIUM
ONE-PIECE WELDED CURB
PIR INSULATION
0.7mm THICK ALUMINIUM FLASHING.